

## Friends of Sarasota County Parks

Our mission is to promote, enhance, and maintain community support for Sarasota County parks and public recreational lands through marketing, fundraising, activities, projects, and volunteer efforts.

Our vision is that the Friends of Sarasota County Parks will provide resources to help Sarasota County achieve and maintain the best parks system of any comparably sized county in the United States.

To learn more about the Friends of Sarasota County Parks, or to donate, go to our website at [www.foscp.org](http://www.foscp.org).



[www.sarasotacountycentennial.com](http://www.sarasotacountycentennial.com)

# Centennial Activity Book

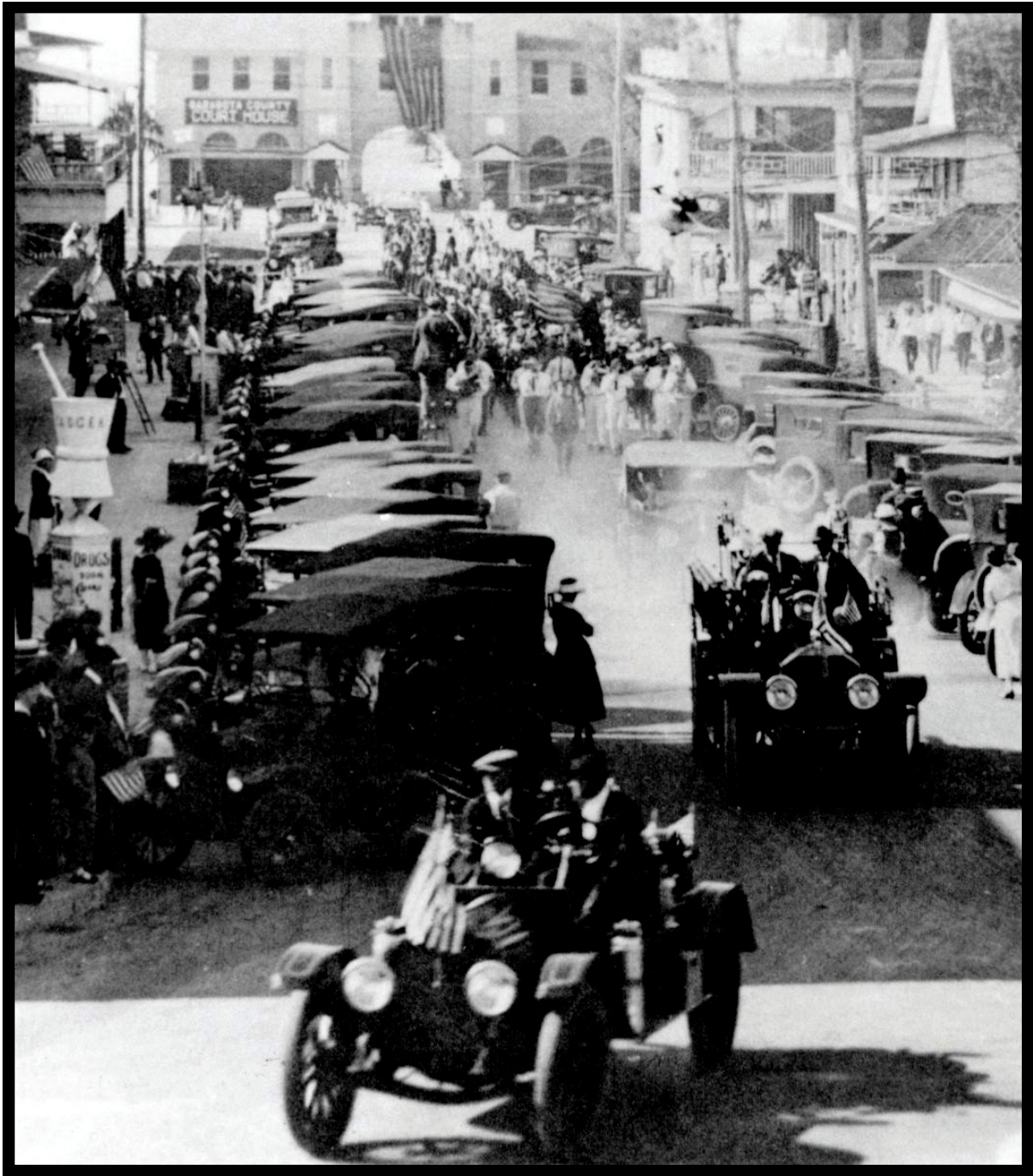


Celebrating Sarasota County 100 years  
July 1, 1921 — July 1, 2021



FIND THE IMAGES

Circle the items when you find them in the picture



Sarasota’s fire engine and band lead a parade up Main Street celebrating the creation of Sarasota County on July 1, 1921.

- Sarasota County Court House Sign

Palm Tree

Fire Engine

Camera on ladder

Porch chair
- Young person holding flag

Drug store mortar and pestle

Spare tire on car

Large American flag

Women in black with white ribbon in hat

FIND THE WORDS

How many words can you come up with using the letters of

SARASOTA COUNTY

_____	_____	_____
_____	_____	_____
_____	_____	_____
_____	_____	_____
_____	_____	_____
_____	_____	_____
_____	_____	_____
_____	_____	_____
_____	_____	_____
_____	_____	_____
_____	_____	_____
_____	_____	_____
_____	_____	_____
_____	_____	_____
_____	_____	_____

Rose Phillips Wilson moved to Sarasota in 1899. With her husband, they founded The Sarasota Times; Sarasota’s first newspaper. She continued publishing the paper after her husband’s death. Rose did not simply report the news she was an active member of the community. She was a founding member of the Town Improvement Society and served on several committees. Rose spoke out for women’s suffrage and was the first to receive word that Sarasota County was created through a telegram addressed to her. In 1923, Rose sold the newspaper to the Sarasota Publishing Company.





True OR False?

- \_\_\_\_\_

1. Bertha Palmer bought 80,000 acres of land in the Sarasota area.
- \_\_\_\_\_

2. Ca’d’Zan, the winter home of John and Mable Ringling, was built by Owen Burns, a Sarasota developer.
- \_\_\_\_\_

3. Dr. Halton was the first physician in Sarasota and he practiced medicine here for over 50 years.
- \_\_\_\_\_

4. You should wear sunscreen only when at the beach.
- \_\_\_\_\_

5. Former slave, Lewis Colson assisted in platting out Sarasota in 1884 and then later in 1899 started the first African American church, Bethlehem Baptist Church.
- \_\_\_\_\_

6. In 1899 Rose Phillips Wilson came to Sarasota to establish The Sarasota Times, Sarasota’s first newspaper.
- \_\_\_\_\_

7. ‘Tamiami’ stands for Tampa to Miami.
- \_\_\_\_\_

8. John Webb built the first manufacturing plant in Sarasota; he refined sugar and produced syrup.
- \_\_\_\_\_

9. Sarasota County was originally formed July 1, 1921.
- \_\_\_\_\_

10. Alligators make great pets.
- \_\_\_\_\_

11. Venice is the shark tooth capital of the WORLD.
- \_\_\_\_\_

12. All beaches have lifeguards.
- \_\_\_\_\_

13. The Van Wezel Performing Arts Hall was originally painted orange and later painted purple.
- \_\_\_\_\_

14. Oranges, Grapefruit and Bananas are all citrus fruits that grow here in Sarasota.
- \_\_\_\_\_

15. Hover Arcade is now our current Administration Building.



Jesse and Rebecca Knight along with their 15 children settled in the Horse and Chaise area (now known as Osprey and Venice). Knight was a successful cattle rancher and Methodist minister who founded the Venice-Nokomis Church. Although never ordained, he was known throughout the area as the Reverend Jesse Knight.

Local Favorites — Then and Now

S E I R R E B E U L B B P Q W  
N P G Y L A S P S T E A O U A  
R G A I R N S Q D A K N T S T  
O T M P O E U P N B S A A E E  
C E E L A A L S A R U N T O R  
T L E E S Y O E E R Q A O G M  
E M R H W B A B C S A S E N E  
E P A A H S M S T Q K G S A L  
W Z P S T U N O C O C Z U M O  
S G V S C D O R A N G E S S N  
T U U U E G R A P E F R U I T  
N F C A O M T O M A T O E S H  
P L R U V M I X K E Y L I M E  
Y L E D X A J L M S N O M E L  
Q S E I R R E B W A R T S O N

- |                |               |              |                  |
|----------------|---------------|--------------|------------------|
| 1. Asparagus   | 7. Cucumbers  | 13. Mangoes  | 19. Strawberries |
| 2. Bananas     | 8. Grapefruit | 14. Melons   | 20. Sweet Corn   |
| 3. Beans       | 9. Guava      | 15. Oranges  | 21. Tomatoes     |
| 4. Blueberries | 10. Key Lime  | 16. Papayas  | 22. Watermelon   |
| 5. Celery      | 11. Lemons    | 17. Potatoes |                  |
| 6. Coconuts    | 12. Limes     | 18. Squash   |                  |

John Crowley settled inland in one of the first farming communities in the Sarasota area known as Miakka. Moving here in 1877, he married Sylvia Anne Carrier and had three children. They grew corn, rice, sugar cane, and sweet potatoes which were used to feed their livestock. Crowley was also a blacksmith and made ironworks for many wagons.

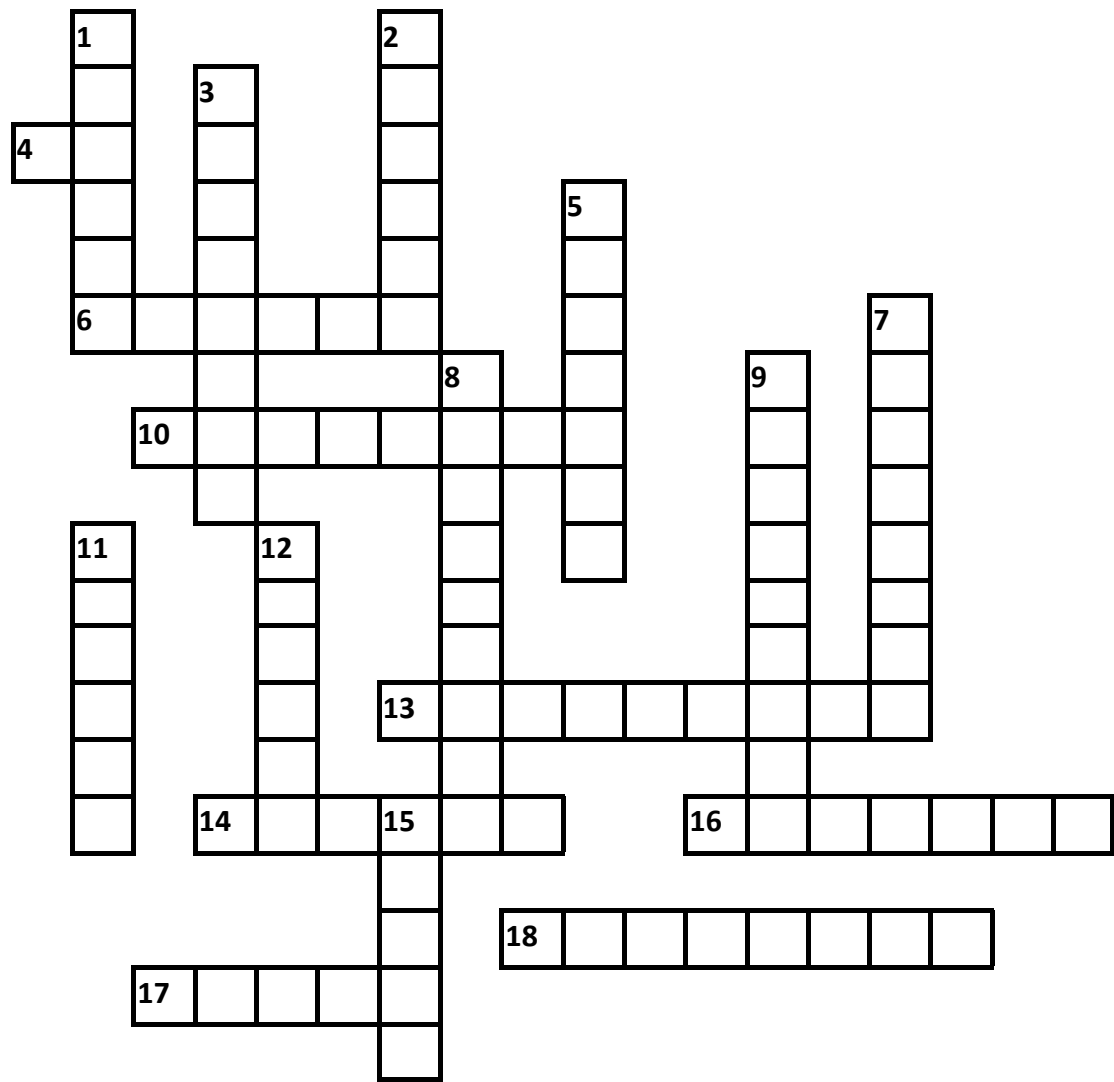


# Cattle and Bertha Palmer



Bertha Honore Palmer was certainly the most influential woman to make an impact on the Sarasota region. From her first visit in 1910 she acquired more than 80,000 acres of pine forest, orange groves and wetlands. She established a cattle operation called, “Meadow Sweet Pastures” where she introduced innovations in raising pure bred cattle. Later this land was donated to the state and became Myakka River State Park. Through her vision Sarasota developed from a sleepy village to a vibrant town.

## Crossword Puzzle



### Across

- 4. 1909, \_\_\_\_ Jack Halton established the Halton Sanatorium for the sick. (abbreviation of)
- 6. 1950, First \_\_\_\_ Circus performs as an extension of a Sarasota High School physical education class.
- 10. 1921, \_\_\_\_ County separates from Manatee County.
- 11. 1933, Boston \_\_\_\_ choose Sarasota for spring baseball training.
- 13. 1899, C.V.S. and Rose Wilson published the first \_\_\_\_, The Sarasota Times.
- 14. 1921, the creation of Sarasota County was celebrated with a \_\_\_\_ down Main Street.
- 16. 1924, The \_\_\_\_ Giants begin spring training in Sarasota.
- 17. 1970 Van \_\_\_\_ opens with the show ‘Fiddler on the Roof.’
- 18. 1910, Bertha Honore Palmer settled in the \_\_\_\_ area and made a big impact on the region.

### Down

- 1. 1927, Ringling Brothers \_\_\_\_ makes Sarasota it’s winter home.
- 2. 1920, Emma E. \_\_\_\_ came to Sarasota and started the Sarasota Grammar School for black children.
- 3. 1924, Sarasota’s first public \_\_\_\_ opens its doors to care for the sick.
- 5. 1907, Sarasota’s first \_\_\_\_ opens in a room donated by Gillespie and used 300 of his books.
- 7. 1842, William A. \_\_\_\_ was the first recorded settler in Sarasota.
- 8. 1867, John and Eliza Webb settled Spanish Point under the \_\_\_\_ Act of 1862.
- 9. 1904, \_\_\_\_ the ‘Father of Sarasota’, also built the first golf course in Sarasota and the state of Florida
- 12. 1941, \_\_\_\_ River State Park opens; gifted from the Bertha Palmer family.
- 15. 1953, The \_\_\_\_ Theatre opens with a presentation of ‘Abduction from the Seraglio’.

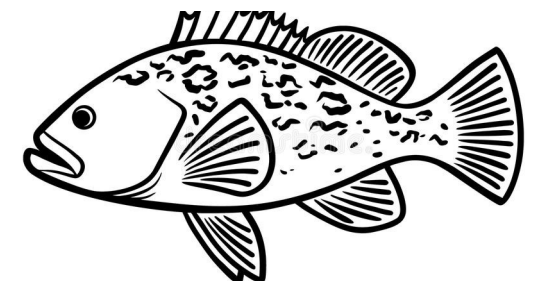
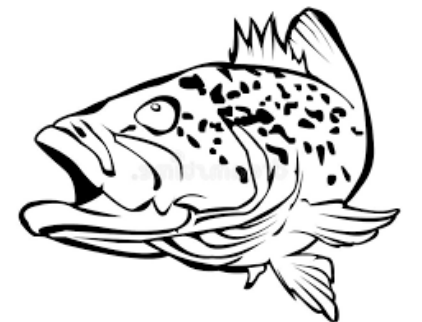
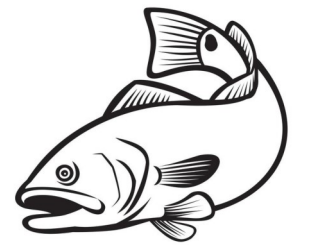
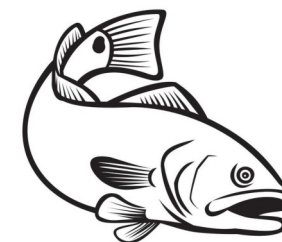
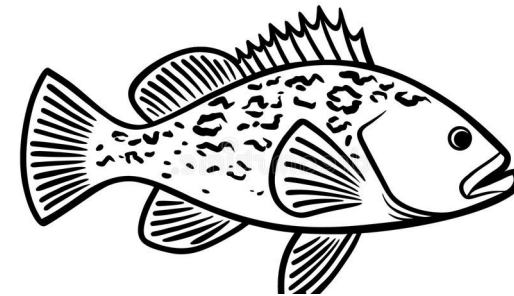
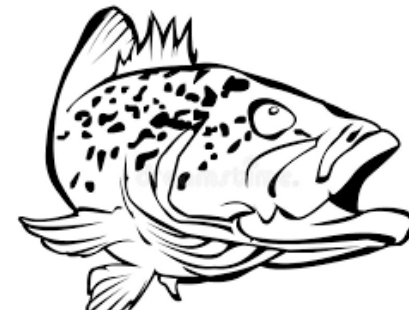
## Father of Sarasota

John Hamilton Gillespie was a man of action and upon his arrival in 1885 he at once had workers improving the village roads and completing construction that was already underway. He supervised the building of a “fine hotel”, named the DeSoto, to encourage tourists to the area. With his help the first train came into Sarasota in 1892 followed in a few years by the Seaboard Air Line Railroad. The village of Sarasota was incorporated into a town in 1902 and he was named the first mayor. Fishing was the main attraction for tourists at that time and was highly promoted. Gillespie also introduced the game of golf to the area with the first practice course consisting of one fairway and two greens. Later, in 1905 he built a nine-hole course with clubhouse.



## Fish, Fish, and More Fish

Match the fish



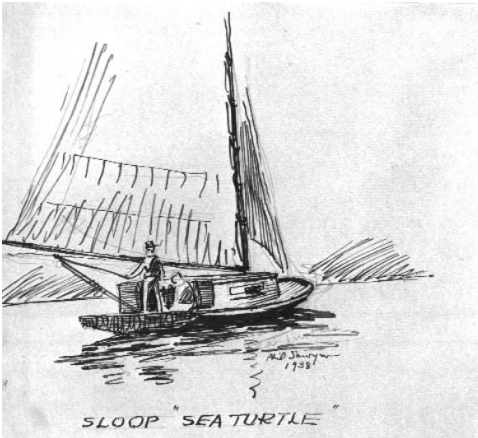
At one time Sarasota was a very well known fishing village with its many established Ranchos along the coast. A Rancho is a group of huts usually made of posts and covered with branches or thatch where a traveler would stay for a night. Fishing was the main attraction for tourists as there were many varieties of fish and the fish were plentiful.



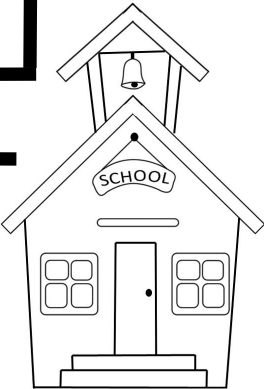
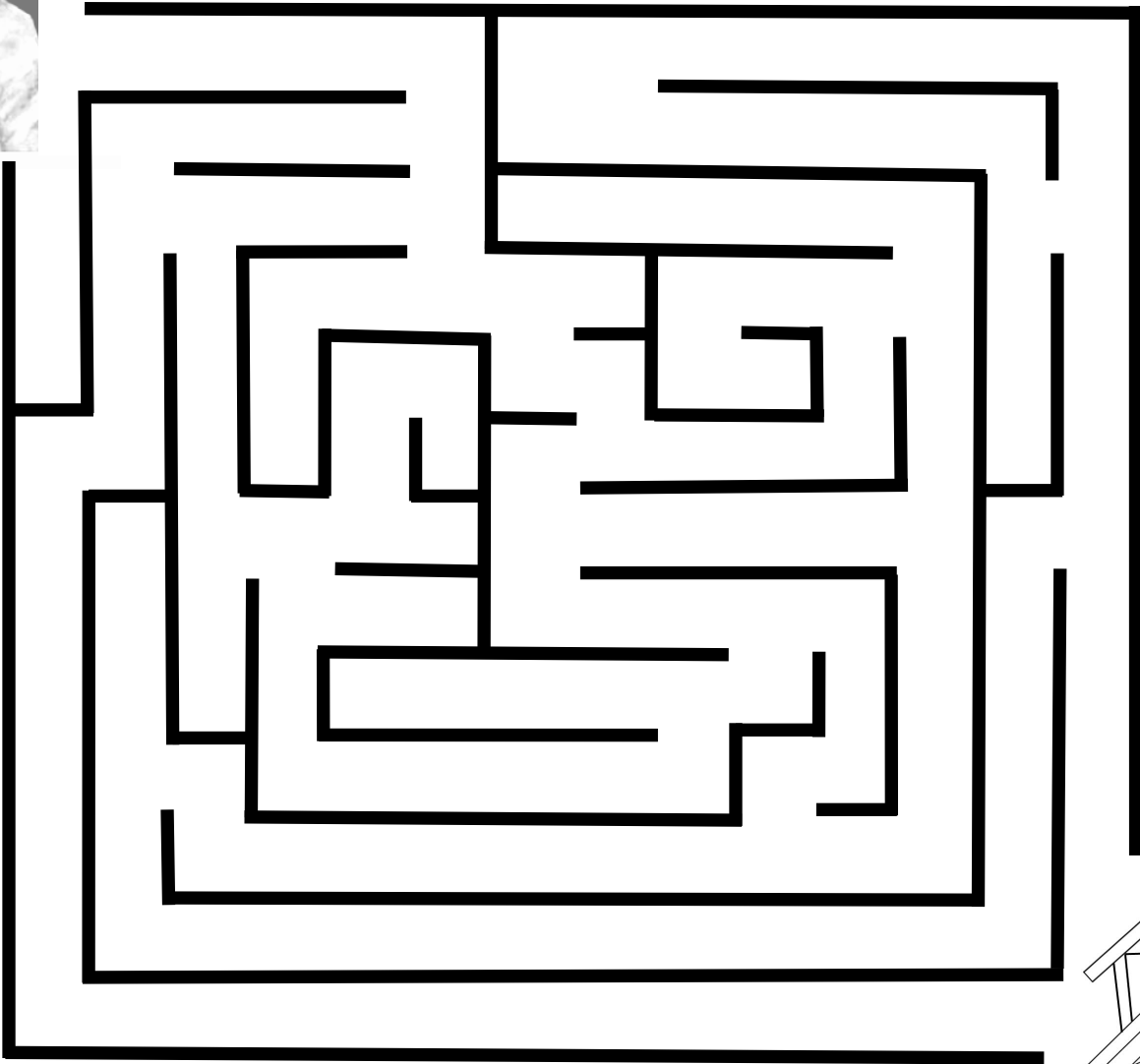
Historical Areas of Sarasota County —  
Then and Now

1. Bird Key	A	C	S	T	A	R	M	A	N	D	S	X	O	P	Y	A
2. Casey Key	K	E	N	S	I	N	G	T	O	N	P	A	R	K	O	T
3. Englewood	Y	I	Q	X	D	J	C	T	E	A	F	O	Y	G	K	X
4. Fruitville	I	F	M	C	O	B	L	H	M	D	C	V	B	Z	E	B
5. Gulf Gate	L	O	F	A	O	S	I	E	S	T	A	Q	L	J	N	E
6. Kensington Park	J	N	R	S	W	N	D	S	I	M	O	K	O	N	S	S
7. Laurel	U	W	U	E	E	H	O	Y	O	F	X	W	N	Y	I	P
8. Lido	B	O	I	Y	L	A	U	R	E	L	M	P	G	E	N	I
9. Longboat	I	T	T	K	G	N	W	O	T	W	E	N	B	R	G	N
10.Newtown	R	R	V	E	N	I	C	E	Y	T	C	J	O	P	T	E
11.Nokomis	D	E	I	Y	E	J	A	T	O	S	A	R	A	S	O	C
12.North Port	K	V	L	H	N	O	R	T	H	P	O	R	T	O	N	R
13.Osprey	E	O	L	G	U	L	F	G	A	T	E	Q	B	P	X	A
14.Overtown	Y	X	E	T	A	G	H	T	U	O	S	M	F	H	T	F
15.Pinecraft	R	O	S	E	M	A	R	Y	D	I	S	T	R	I	C	T
16.Rosemary District	K	K	K	R	A	P	N	O	T	G	N	I	S	N	E	K
17.Sarasota																
18.Siesta																
19.South Gate																
20.St Armands																
21.Vamo																
22.Venice																

John Blackburn settled and helped develop the area known as Horse and Chaise (now the Nokomis / Venice area). He was a hard worker and besides growing potatoes, he built his own sloop (boat) which he used to carry cargo and guests to the surrounding areas. He named the boat, “Sea Turtle”.



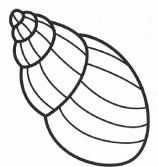
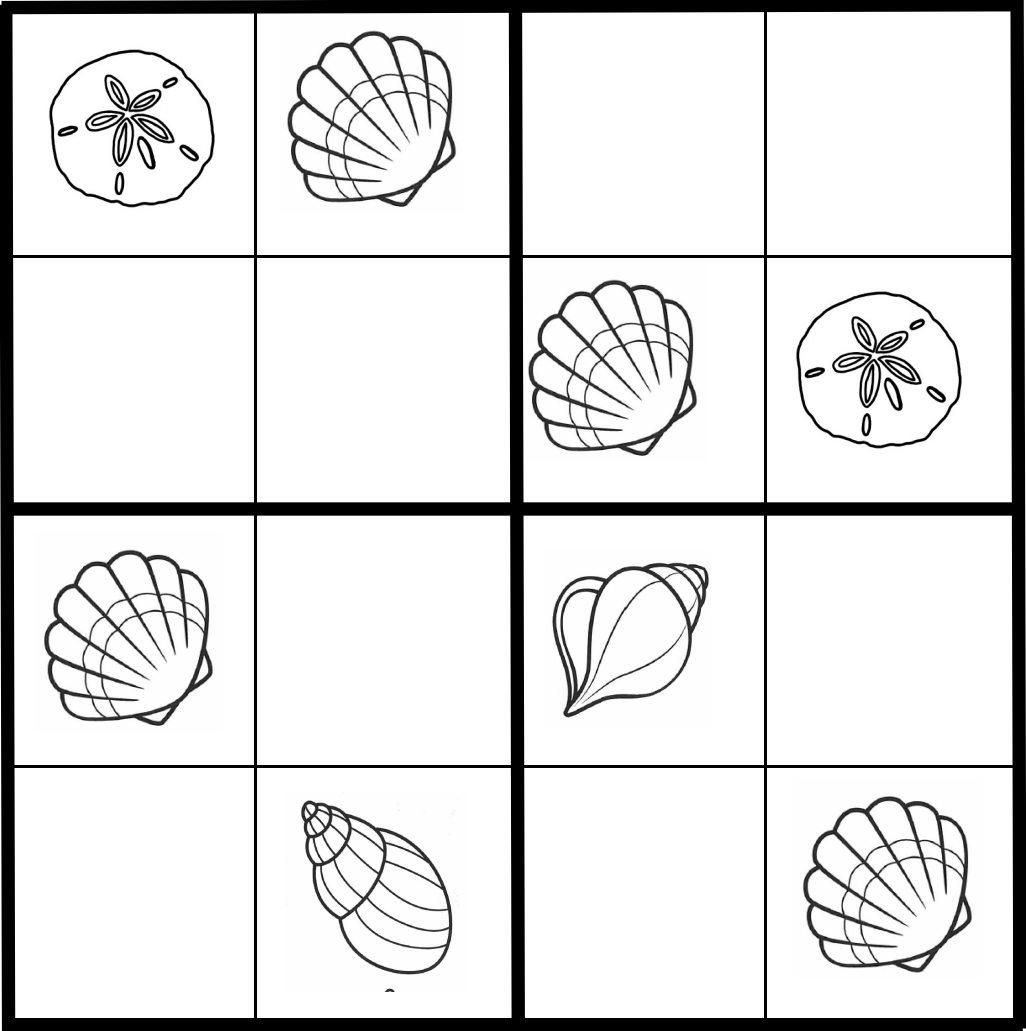
Help Emma get to school before classes start



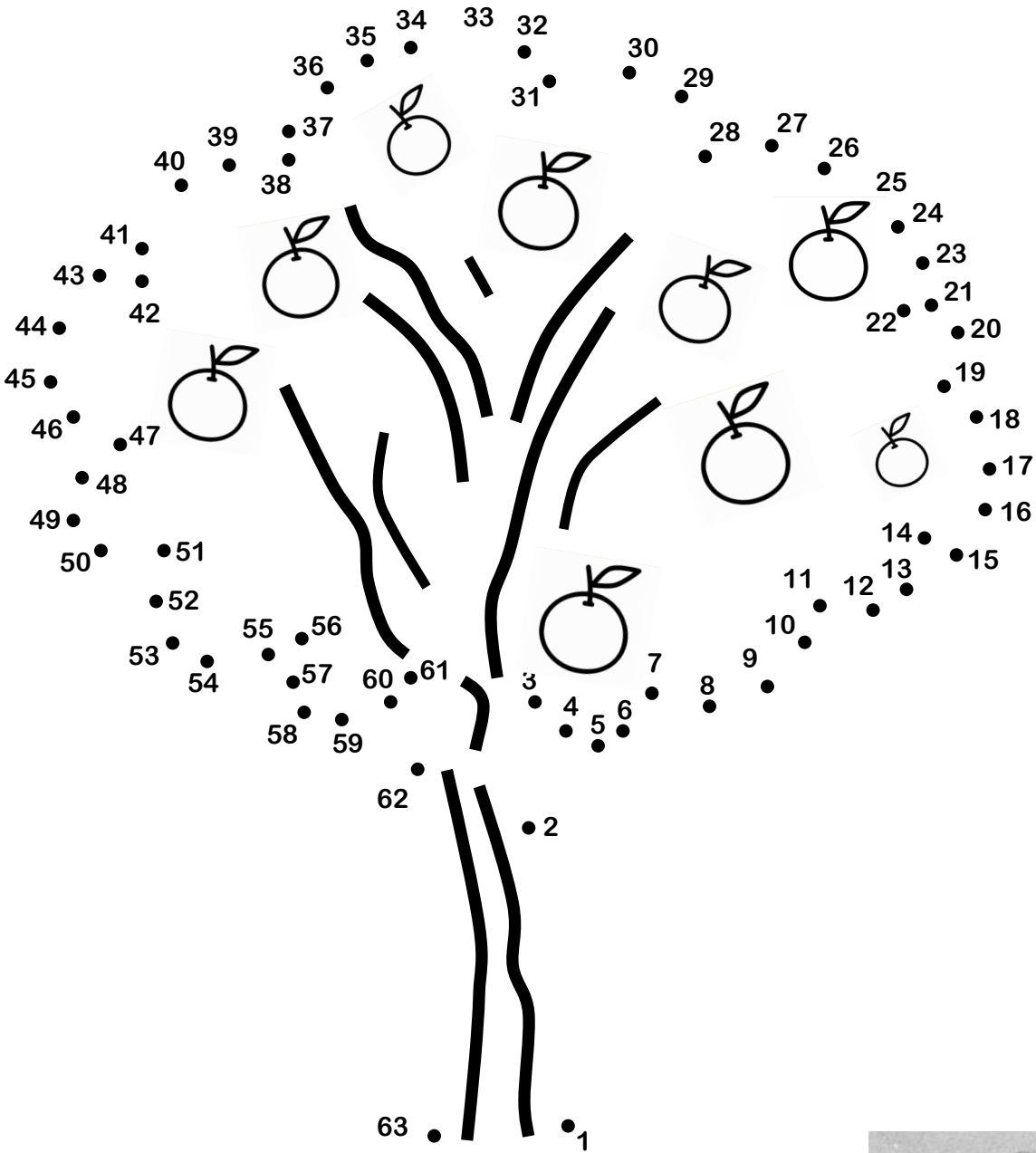
Emma E. Booker came to Sarasota in 1910 when education for blacks was rare. She was instrumental in renting a hall and starting the Sarasota Grammar School, so black children would have a place to go where they could learn to read write. Emma became its first principal and taught several of the classes. She did not have a teaching degree but regardless of the many obstacles, Emma earned her bachelor’s degree after almost fifty years. When the Emma E. Booker Elementary School was named in her honor an editorial commented, “Emma Booker persevered, personally encouraging students, underwriting their continued education and pressuring intransigent administrators to provide for blacks the same educational opportunities available to whites.”

# Sea Shell Sudoku

Within the rows and columns are 4 squares (made up of 2 x 2 spaces)  
Each row, column and square needs to be filled out with the correct shell so shells are not repeated in the row, column, or square.



# Connect the Dots

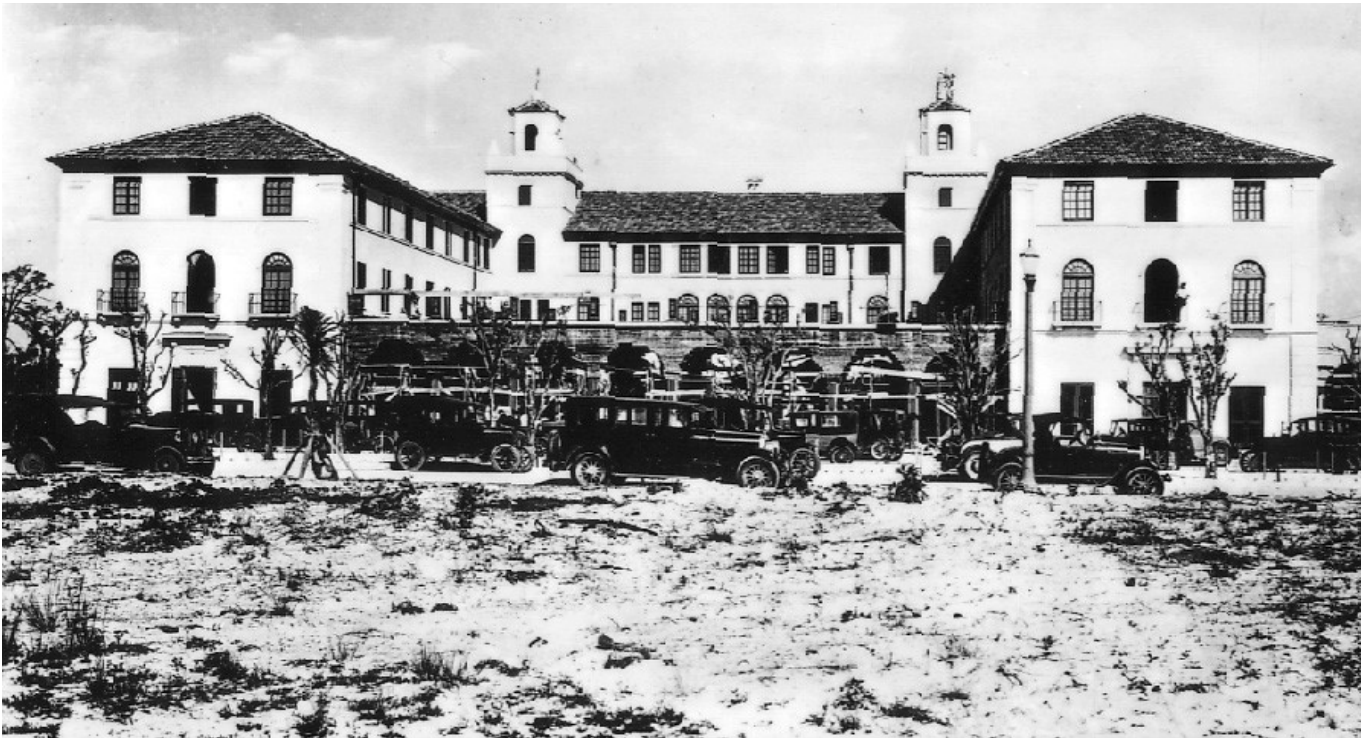


Harry Higel came to Sarasota with his father Frank Higel in the late 1800's. Harry made many contributions to the Sarasota community. He ran a steamer service, help start the first telephone service, served as a real estate agent and became mayor of the town of Sarasota. One of his most important contributions was the development of Sarasota Key (now Siesta Key). The new development was called "Siesta on the Gulf" Tragically he was murdered in 1921 and laid to rest at the Rosemary Cemetery.

William Whitaker, who moved to Sarasota in 1842, at the age of 21, is credited with having planted the first orange grove in the area from seeds he acquired from Cuban merchants in exchange for smoked mullet. In the early 1900's after a bad freeze in Polk County, the Albritton family decided to move to Sarasota to continue their citrus legacy. The Albritton Fruit Company has been selling citrus for 150 years and is one of the oldest businesses in Florida.



Decode the name of this Historic Building



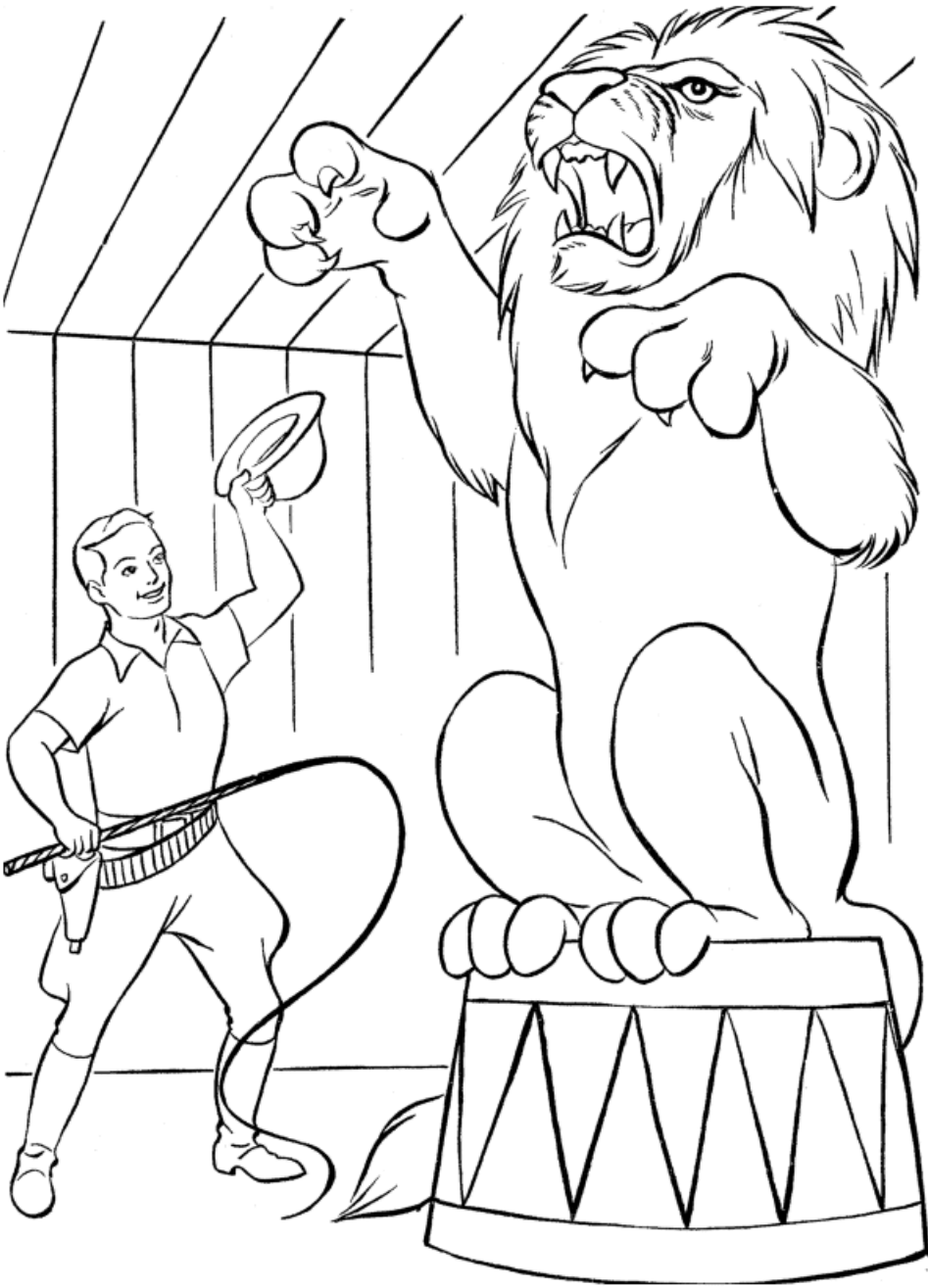
6 12 15 18 9 4 1 13 5 4 9 3 1 12 3 5 14 20 5 18

- |       |       |        |        |        |        |        |
|-------|-------|--------|--------|--------|--------|--------|
| 1 = A | 5 = E | 9 = I  | 13 = M | 17 = Q | 21 = U | 25 = Y |
| 2 = B | 6 = F | 10 = J | 14 = N | 18 = R | 22 = V | 26 = Z |
| 3 = C | 7 = G | 11 = K | 15 = O | 19 = S | 23 = W |        |
| 4 = D | 8 = H | 12 = L | 16 = P | 20 = T | 24 = X |        |

Dr. Fred Albee, a New York orthopedic surgeon came to Venice in 1916 with a dream. Albee planned a city in the Venice-Nokomis area, opened the hotel Pollyanna Inn in 1922, organized the Venice-Nokomis Chamber of Commerce and opened the Venice-Nokomis Bank in 1925. Dr. Albee believed Venice was an ideal place for a hospital. On Nov. 15, 1933, he opened his Florida Medical Center in the former Park View Hotel. His hospital was one of the first to provide air ambulance service flown by his nephew.



Circus and Sarasota



John Ringling along with his wife Mable purchased 20 acres of Sarasota waterfront property in 1911, where they built the Ca'd'Zan (winter residence) and a museum. During the 1920s the Ringlings became active in the community and purchased additional real estate and developed land on the Sarasota Keys . In 1927, John made Sarasota the winter headquarters of the Ringling, Barnum and Bailey Circus. Throughout their lives, John and Mable traveled to Europe collecting fine art which can now be seen at The Ringling Museum.

